

Animal Cell Coloring

I. Directions: Color each part of the cell its designated color.

Cell Membrane (light brown)

Nucleolus (black)

Cytoplasm (light yellow)

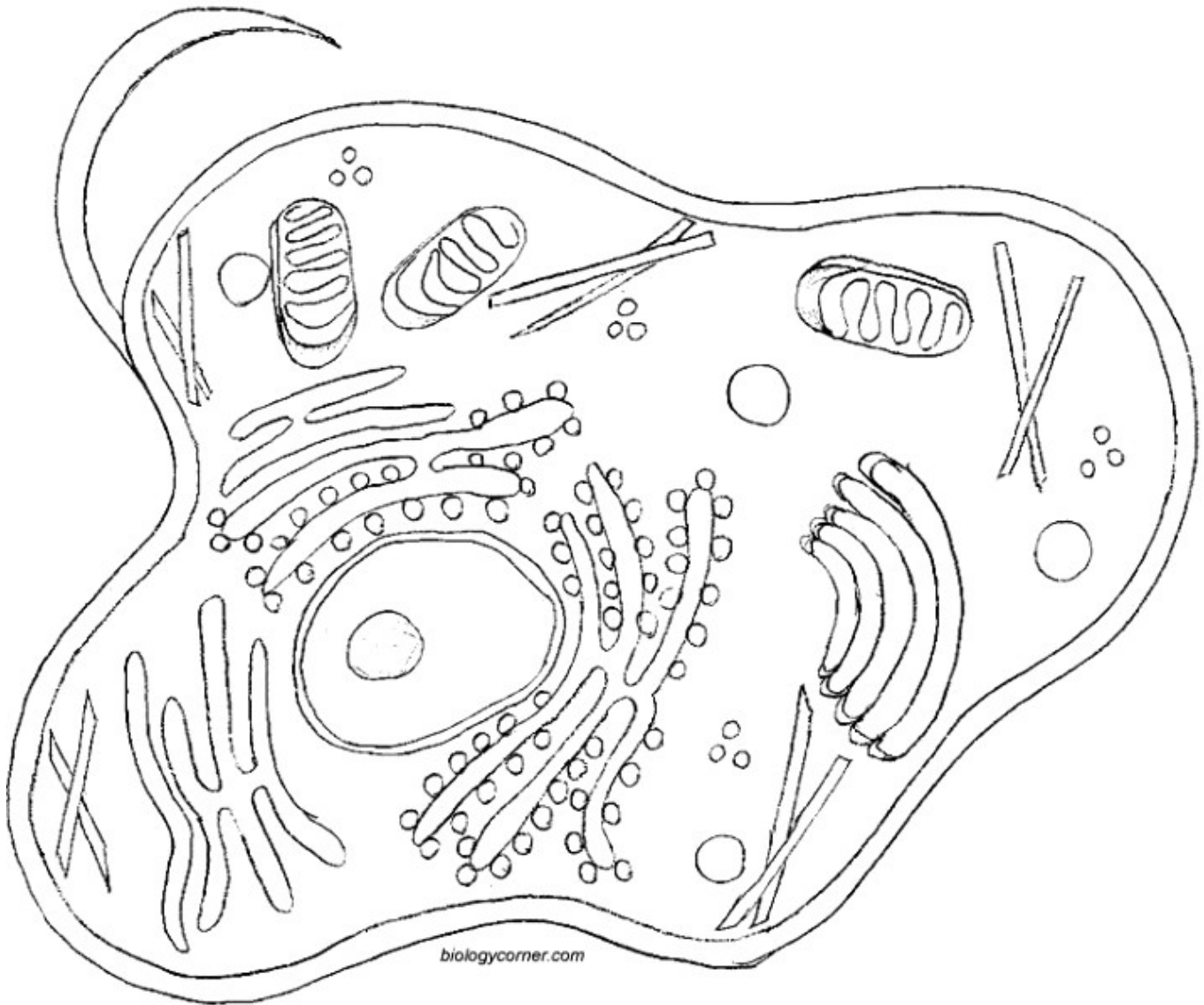
Golgi Apparatus (pink)

Mitochondria (orange)

Smooth Endoplasmic Reticulum (light blue)

Ribosome (red)

Rough Endoplasmic Reticulum (dark blue)



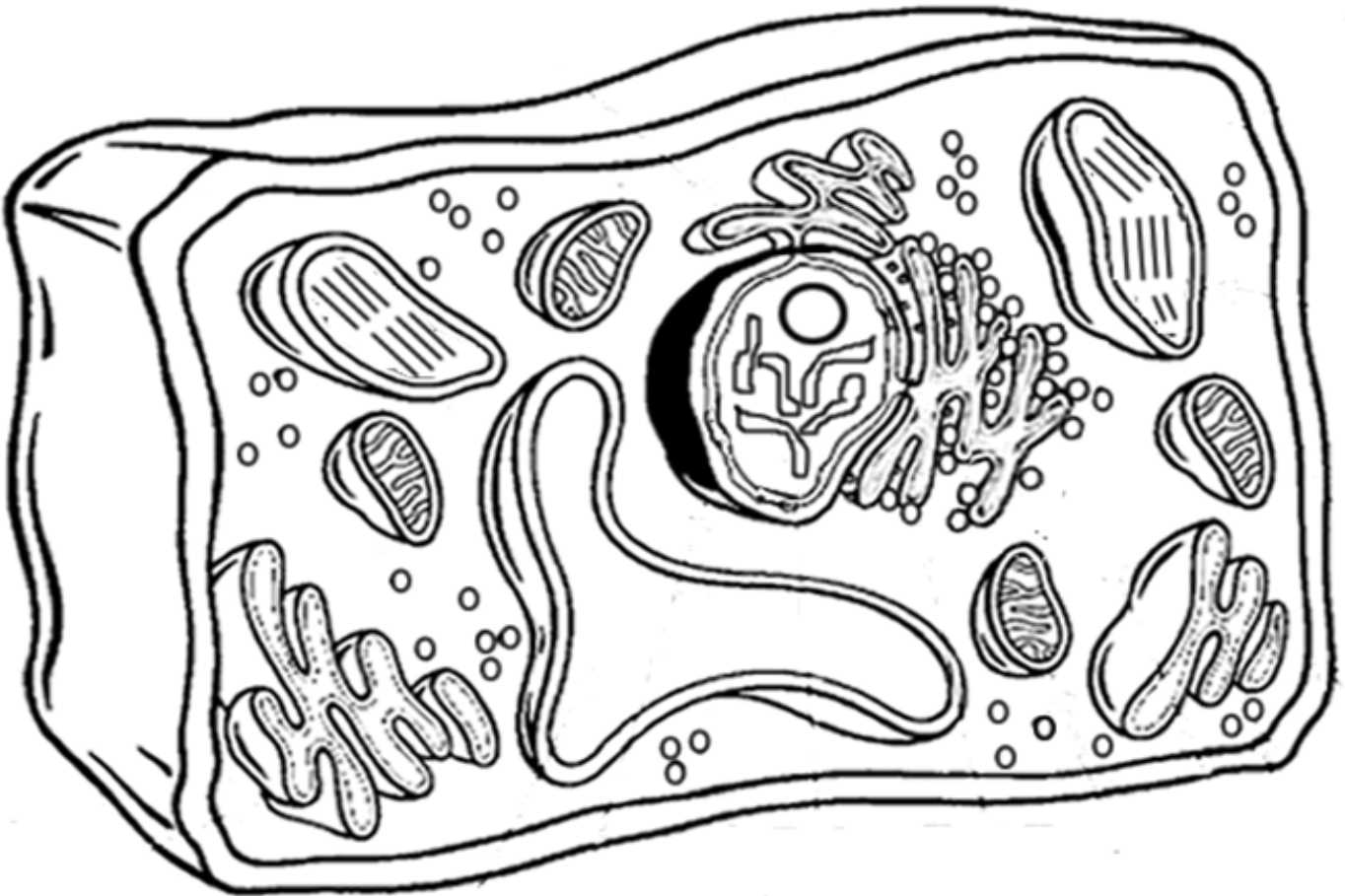
II. Briefly describe the function of the cell parts.

1. Cell membrane	
2. Endoplasmic Reticulum	
3. Ribosome	7. Mitochondria
4. Golgi Apparatus	8. Nucleus

Plant Cell Coloring

I. Directions: Color each part of the cell its designated color.

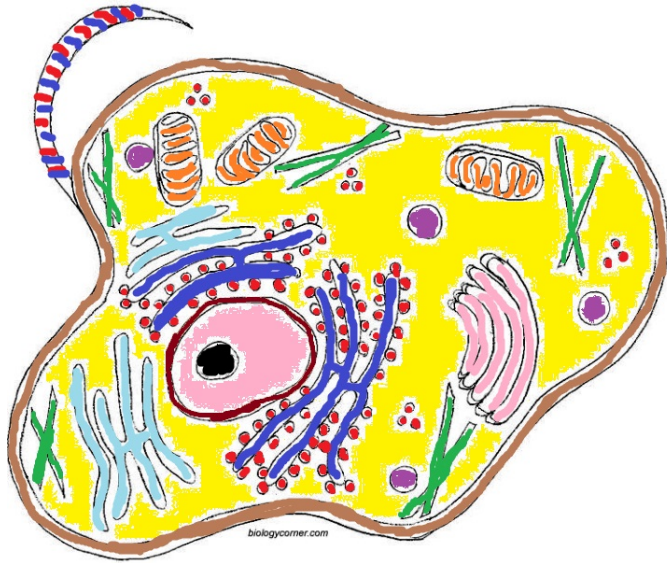
- | | | |
|---|--|--|
| <input type="checkbox"/> Cell Membrane (orange) | <input type="checkbox"/> Cell Wall (dark green) | <input type="checkbox"/> Ribosome (purple) |
| <input type="checkbox"/> Mitochondria (red) | <input type="checkbox"/> Nucleolus (brown) | <input type="checkbox"/> Cytoplasm (white) |
| <input type="checkbox"/> Vacuole (light Blue) | <input type="checkbox"/> Chloroplasts (light green) | <input type="checkbox"/> Golgi Apparatus (dark blue) |
| | <input type="checkbox"/> Smooth Endoplasmic Reticulum (pink) | |
| | <input type="checkbox"/> Rough Endoplasmic Reticulum (pink) | |



Analysis

1. Name two things found in a plant cell that are not found in an animal cell:
2. What is the function of the chloroplasts?
3. What is the function of the vacuole?

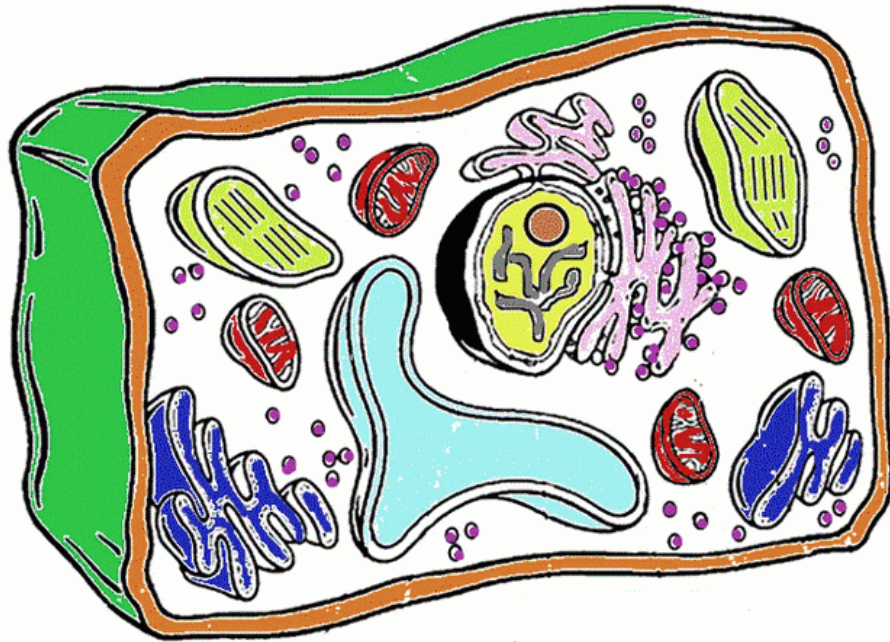
Animal Cell Coloring KEY



II. Briefly describe the function of the cell parts.

1. Cell membrane: barrier between cell and outside
2. Endoplasmic Reticulum: cell transport
3. Ribosome; makes proteins
4. Golgi Apparatus: packaging, processing, secreting vesicles
7. Mitochondria: produces energy for cell; cell respiration
8. Nucleus : control center, contains DNA

Plant Cell Coloring KEY



Analysis

1. Name two things found in a plant cell that are not found in an animal cell: chloroplast, cell wall
2. What is the function of the chloroplasts? photosynthesis
3. What is the function of the vacuole? stores water